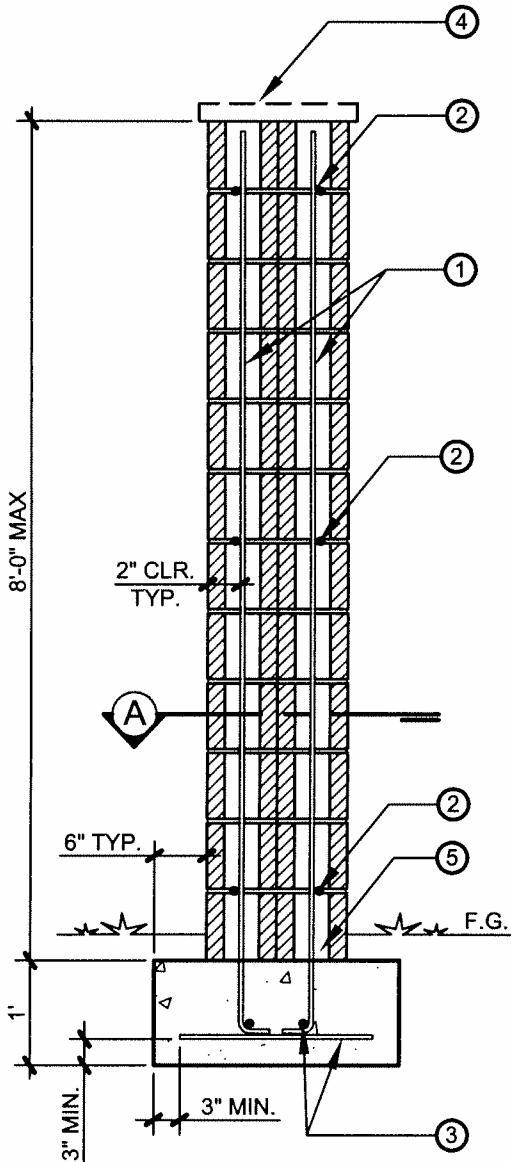


**CITY OF HENDERSON**  
 240 Water Street  
 P.O. Box 95050  
 Henderson, NV 89009  
 702-267-3610

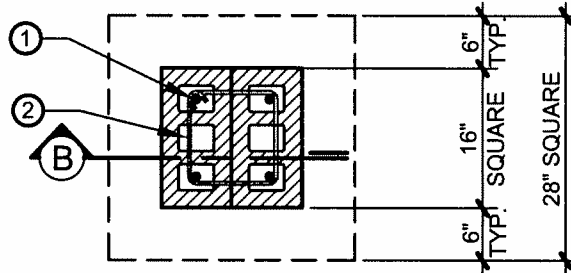
# BUILDING & FIRE SAFETY

702-267-3650  
 Fax 702-267-3603



**SECTION 'B'**

NTS



**SECTION 'A'**

NTS

## GENERAL NOTES:

1. ALL WORK SHALL CONFORM TO THE 2006 IBC WITH SNA.
2. CONCRETE MASONRY SHALL COMPLY WITH THE FOLLOWING:
  - A. ASTM 55 OR C 90
  - B. MORTAR: TYPE M OR S, 1900 PSI
  - C. GROUT SHALL CONFORM TO ASTM C 476, 2000 PSI MIN.
3. THE ULTIMATE COMPRESSIVE STRENGTH REQUIRED FOR FOUNDATION CONCRETE SHALL BE 4500 P.S.I.
4. ALL REINFORCING STEEL SHALL BE INTERMEDIATE GRADE ASTM A615-40.
5. LAP VERTICAL STEEL 20 INCHES MINIMUM.
6. SITE PLAN SHALL BE SUBMITTED FOR REVIEW BEFORE THE BUILDING PERMIT CAN BE ISSUED.

## KEYNOTES: #

- ① - #4 VERTICAL REBAR AT EACH CELL CORNER, GROUT-REINFORCED CELL SOLID
- ② - #3 REBAR, TIE IN MINIMUM 8-INCH BOND BEAM AT TOP, MIDDLE, AND BOTTOM. PROVIDE A 2-INCH MINIMUM GROUT COVER AT ALL SIDES OF REBAR.
- ③ - (2) #4 CONTINUOUS REBAR EACH WAY
- ④ - FINISH TOP OF COLUMN WITH A CAP BLOCK OR WITH CONCRETE FOR WATER RUN-OFF.
- ⑤ - GROUT ALL CELLS AND CAVITIES SOLID BELOW GRADE.

DRAWING NAME:

**16" X 16" MASONRY PILASTER DETAIL**

DRAWING NO.:

**BFS-2**

DATE:

**AUGUST 2007**