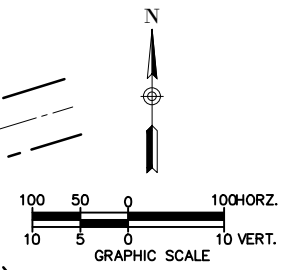
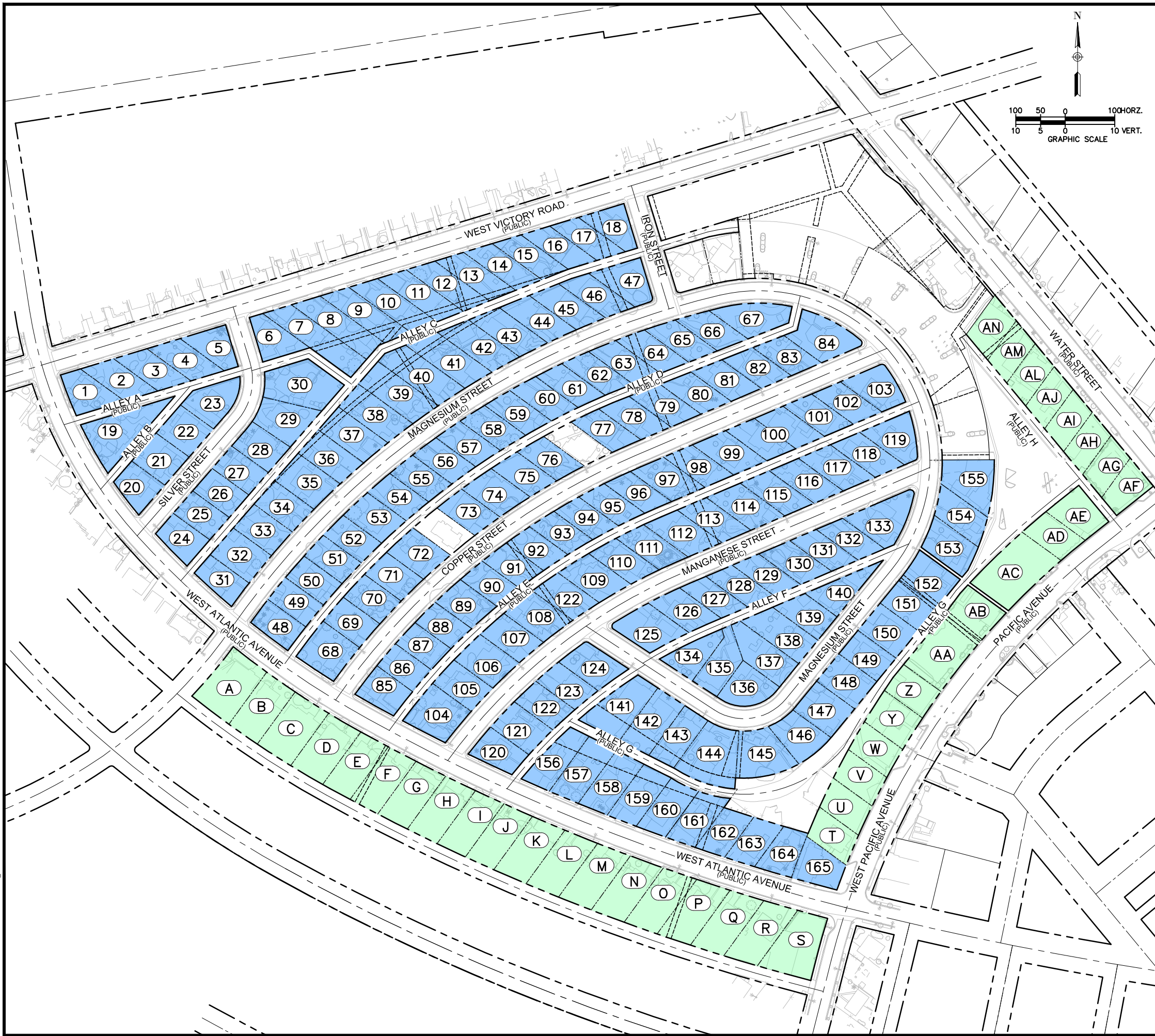



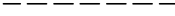

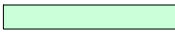


DRAWING: C:\BMS\21\B\USER\DM54498\31402476\_GENERAL ONSITE PROPERTIES.DWG



**LEGEND KEY**

-  EXISTING ROADWAY CENTERLINE
-  EXISTING ROW
-  EXISTING PROPERTY LINE
-  EXISTING EASEMENT
-  LOTS REQUIRING WATER SERVICE RELOCATION FROM REAR YARD TO FRONT YARD
-  LOTS REQUIRING WATER AND/OR SEWER SERVICE LATERAL RELOCATION/EXTENSION

REV.	DESCRIPTION	BY	DATE	APPROVAL



HENDERSON

**CITY OF HENDERSON, NEVADA**  
 TOWNSITE WATER & SEWER UTILITIES - PHASE 4  
 LOTS REQUIRING WATER AND SEWER  
 LATERAL RELOCATION EXHIBIT

DESIGNED BY:  
 AT

DRAWN BY:  
 JS

CHECKED BY:  
 JAR

DATE:  
 04/28/2023

JOB NO.  
**100061345**

DRAWING NO.  
**EXH-1**

TOWNSITE WATER & SEWER UTILITIES - PHASE 4