





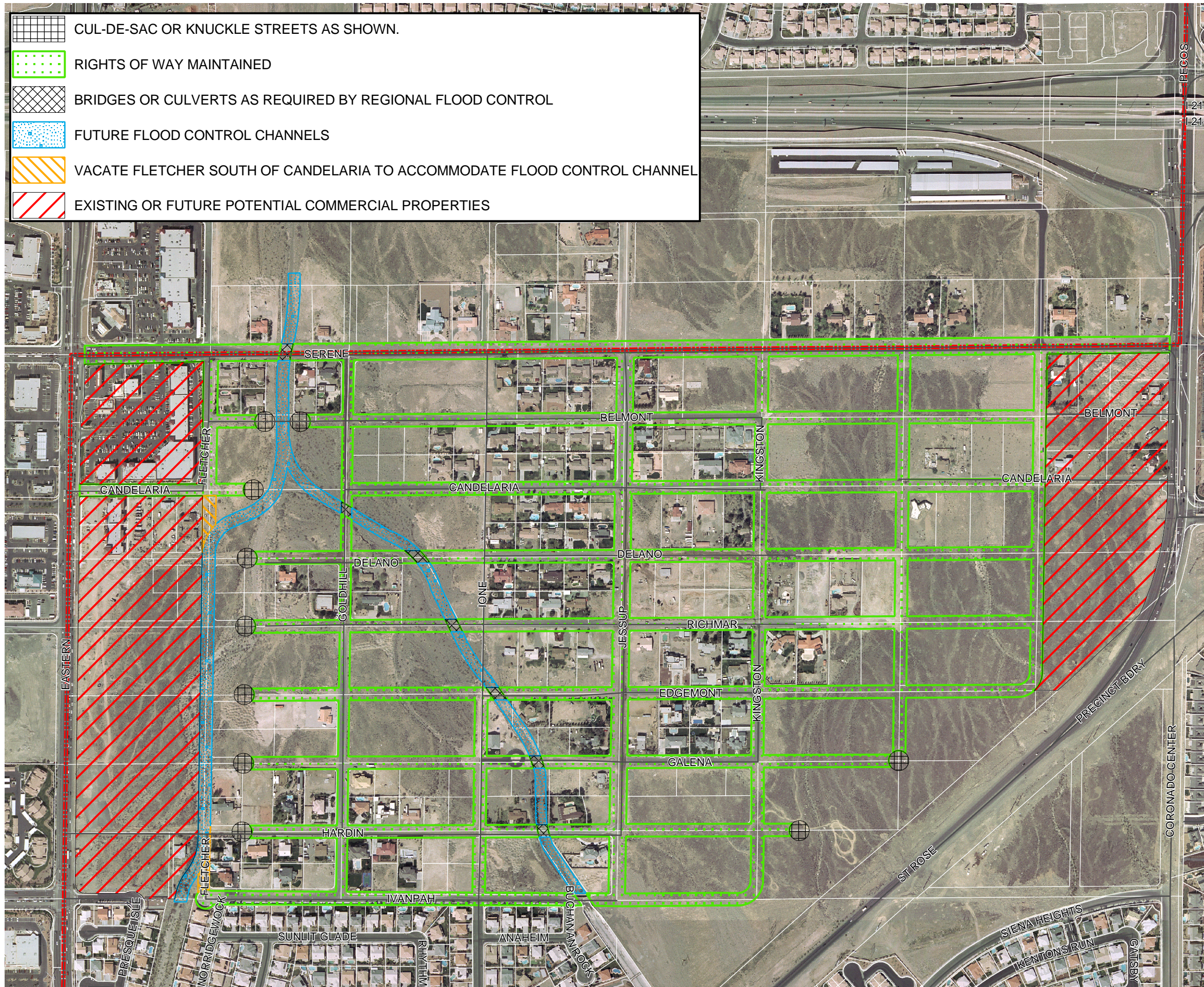

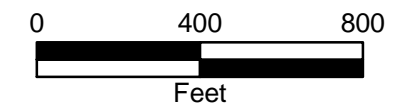


-  CUL-DE-SAC OR KNUCKLE STREETS AS SHOWN.
-  RIGHTS OF WAY MAINTAINED
-  BRIDGES OR CULVERTS AS REQUIRED BY REGIONAL FLOOD CONTROL
-  FUTURE FLOOD CONTROL CHANNELS
-  VACATE FLETCHER SOUTH OF CANDELARIA TO ACCOMMODATE FLOOD CONTROL CHANNEL
-  EXISTING OR FUTURE POTENTIAL COMMERCIAL PROPERTIES



Future Street Circulation

 City of Henderson



Geographic Information Services

Community Development

September 2003

