



Captain Kit

Activity Booklet



Captain Kit and the Ready Crew have a family communication plan. **Fill out your communication plan with your family so you are ready in an emergency.**

My Family Communication Plan

 My name: _____

 My address: _____

 My telephone number: _____

 Family meeting place: _____

Family Information:

 Work telephone number: _____

 Cell phone number: _____

 Email: _____

 Neighbor/relative name and telephone number:

 Out of town name and telephone number:

Remember to dial 9-1-1 in an emergency.



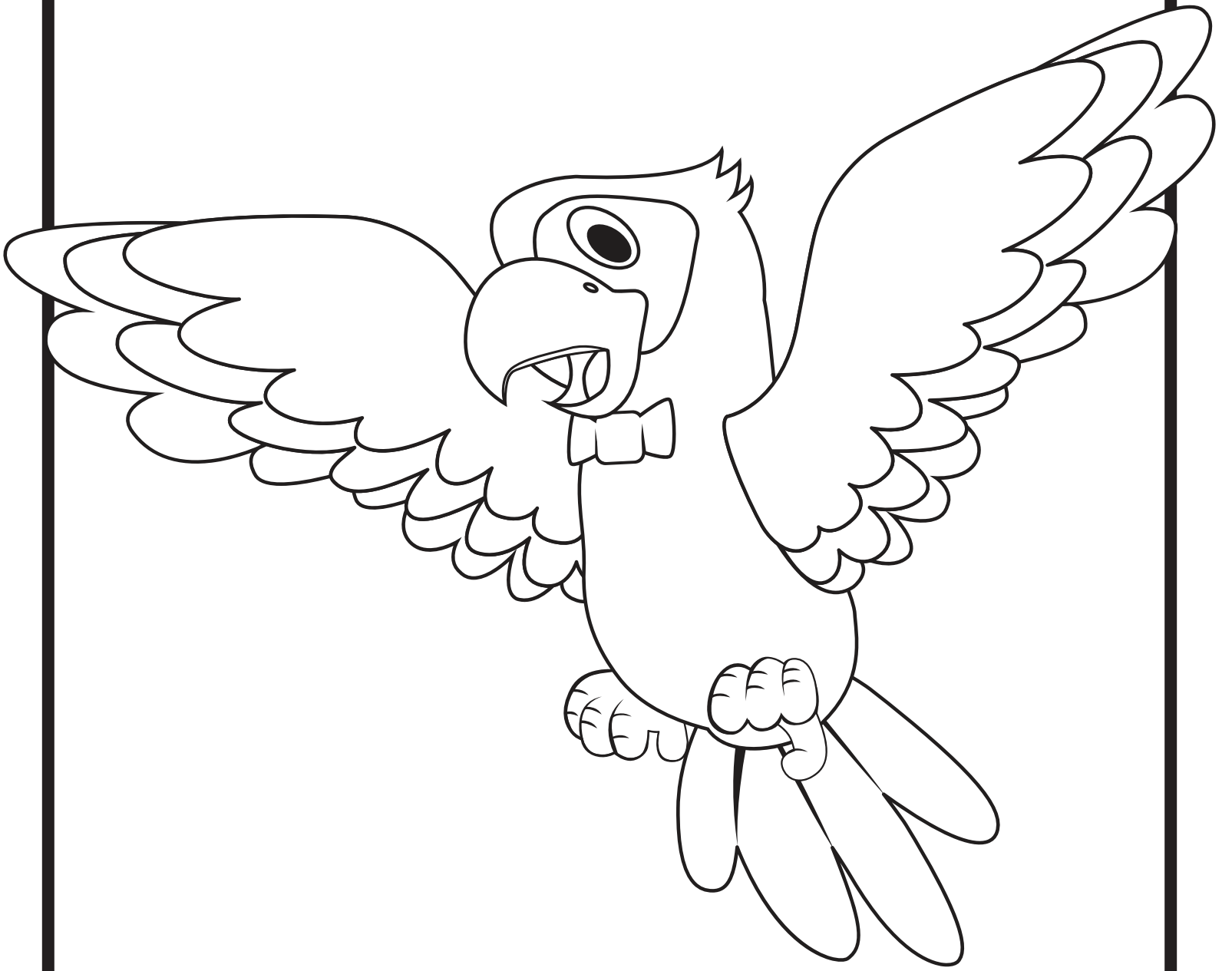
Captain Kit

Captain Kit is the fearless leader of the READY Crew and the captain of the Royal Ruby.

Circle Items

Circle the items Captain Kit has in his emergency supply kit





Preppy the Parrot

Preppy is Captain Kit's pet parrot and loyal friend.

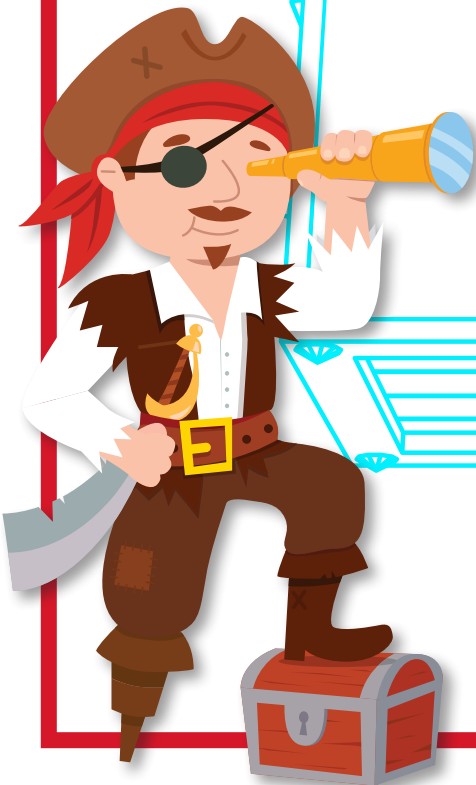
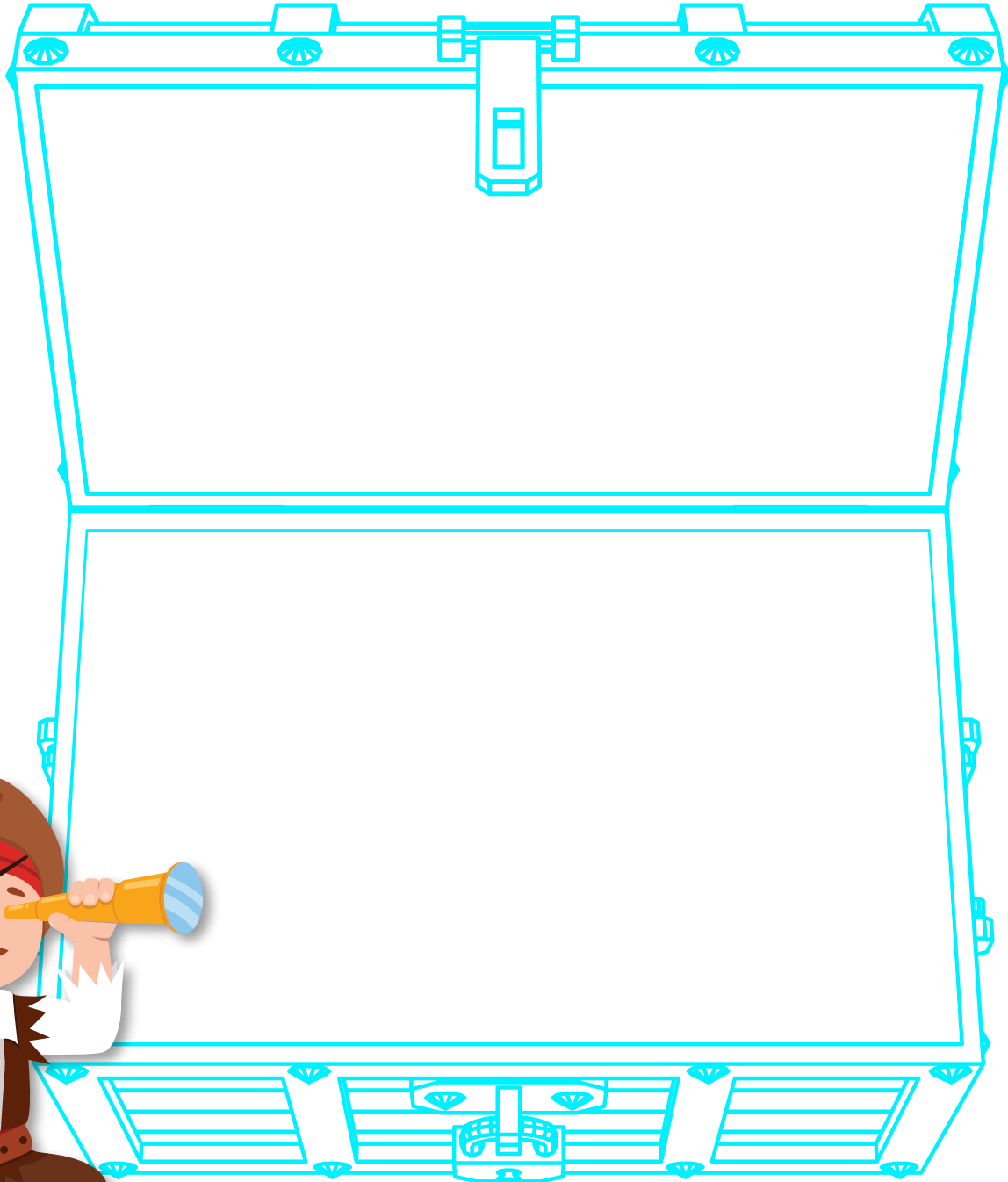


Kidd Kit

Captain Kit's loyal cabin boy and apprentice.

Captain Kit's Emergency Supply Kit

Draw the supplies for Captain Kit's Emergency Supply Kit below.



Examples of what you might want in your kit:

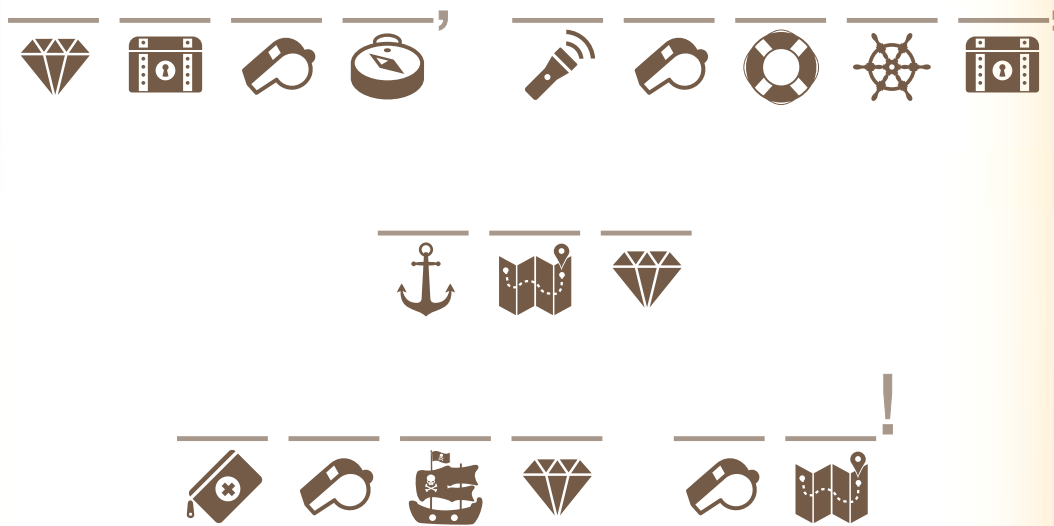
Flashlight
Radio
Pet Supplies

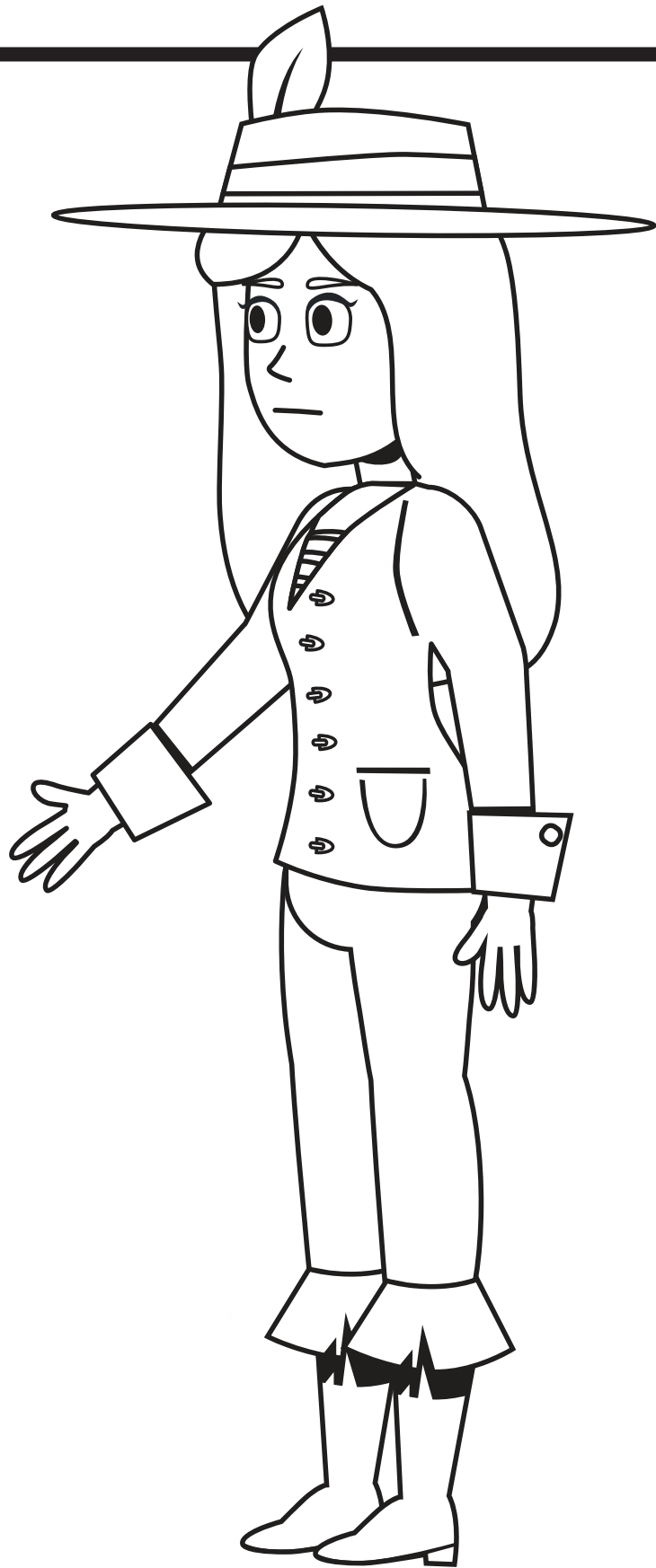
First Aid Kit
Food
Special Item

Water
Whistle
Games

Preppy's Code Cracker

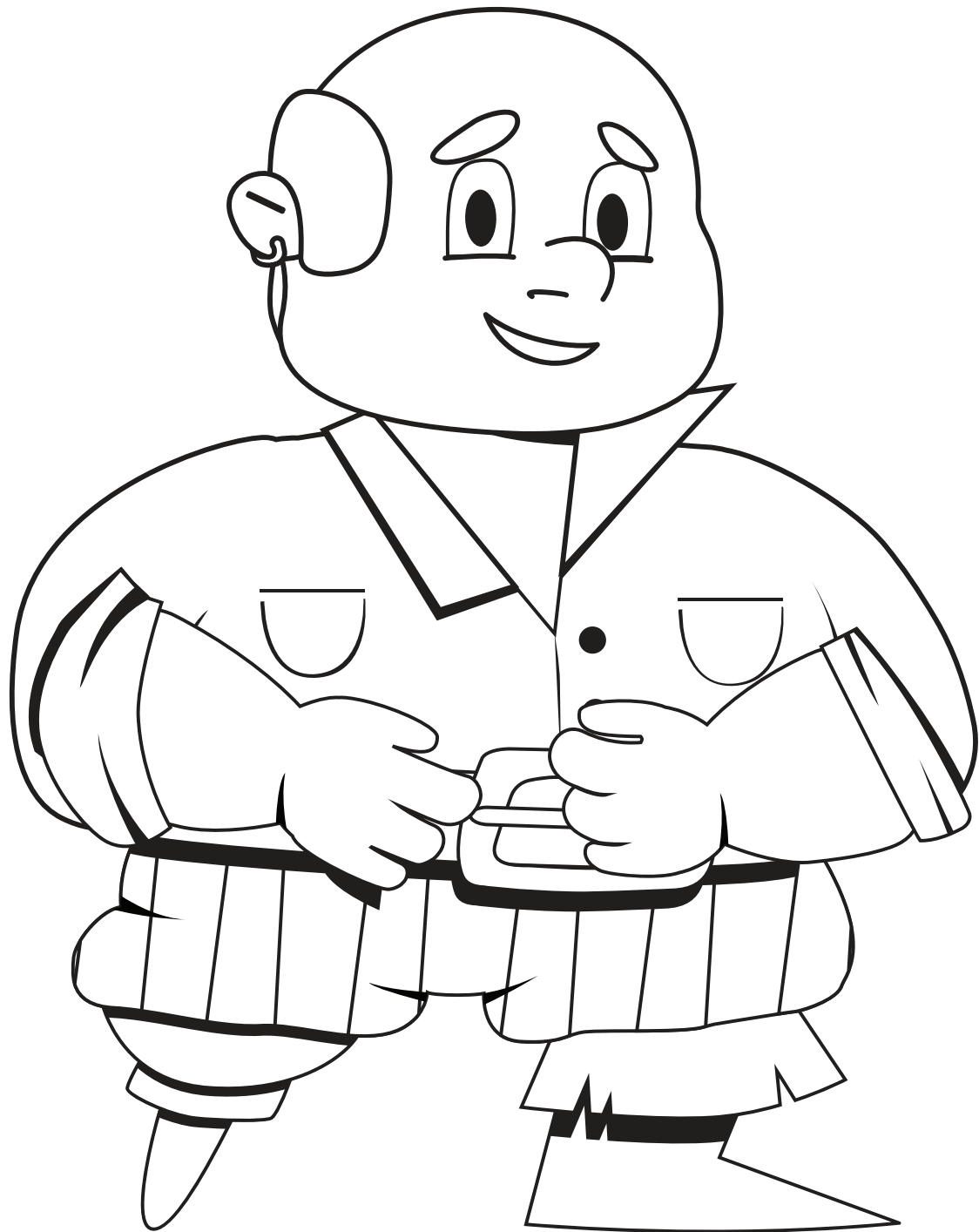
What do you do during an earthquake?
Use the code to help answer the question.





Charlotte

Captain Kit's first mate.



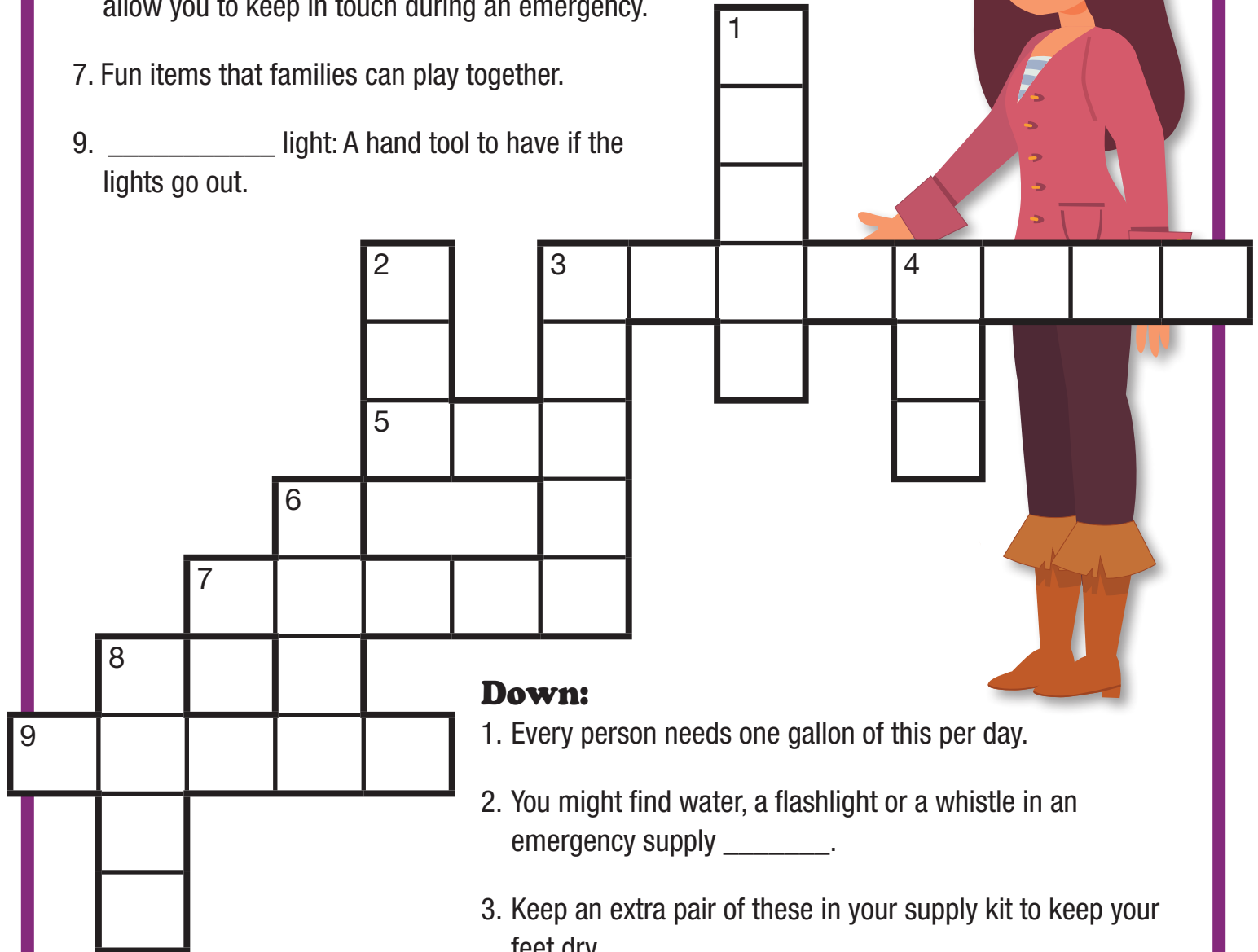
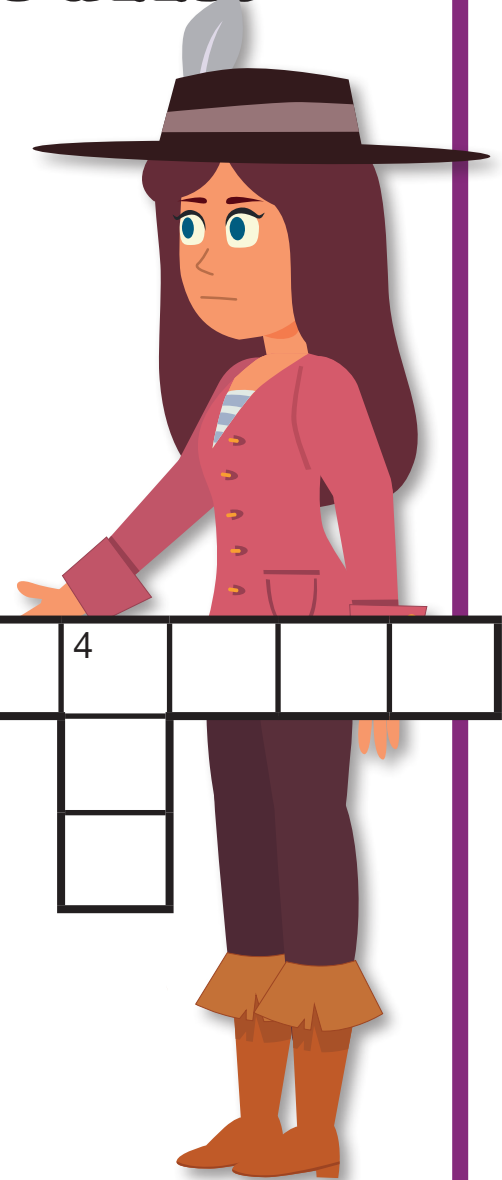
Bumbly

Quartermaster of the Royal Ruby. Bumbly is responsible for protecting the treasure and shares command of the ship with Captain Kit.

Charlotte's Crossword Puzzle

Across:

3. _____ bag: Great for napping or keeping warm.
5. Every family member should carry a contact list with at least _____ different phone numbers that will allow you to keep in touch during an emergency.
7. Fun items that families can play together.
9. _____ light: A hand tool to have if the lights go out.



Down:

1. Every person needs one gallon of this per day.
2. You might find water, a flashlight or a whistle in an emergency supply _____.
3. Keep an extra pair of these in your supply kit to keep your feet dry.
4. Furry, scaly, or feathery family member that should be part of your preparedness plan.
6. If you get lost, you will use these to get back home.
8. Families can create a communication _____ so that they know where to meet and whom to call during an emergency.

Kidd Kit's Word Search

Can You Spot the Words?

D F B H C E J T G R
R G E K F N K C D E
O K X S B Y H O S A
P H H T Z G A M E D
C Y V O C X C M Z Y
O R I P G L M U X C
V N H D Z C I N K R
E K F R E Y F I R E
R E A O D J H C L W
H A C P V B G A E N
O R F R H E A T O T
L T S O T U X I I U
D H A L V K S O F I
O Q F L O O D N K J
N U A D F E G P T G
R A U T R N M L J D
F K I P G O B A G R
C E M E R G E N C Y

Drop Cover Hold On

Communication Plan

Go Bag

Stop Drop Roll

Ready Crew

Fire

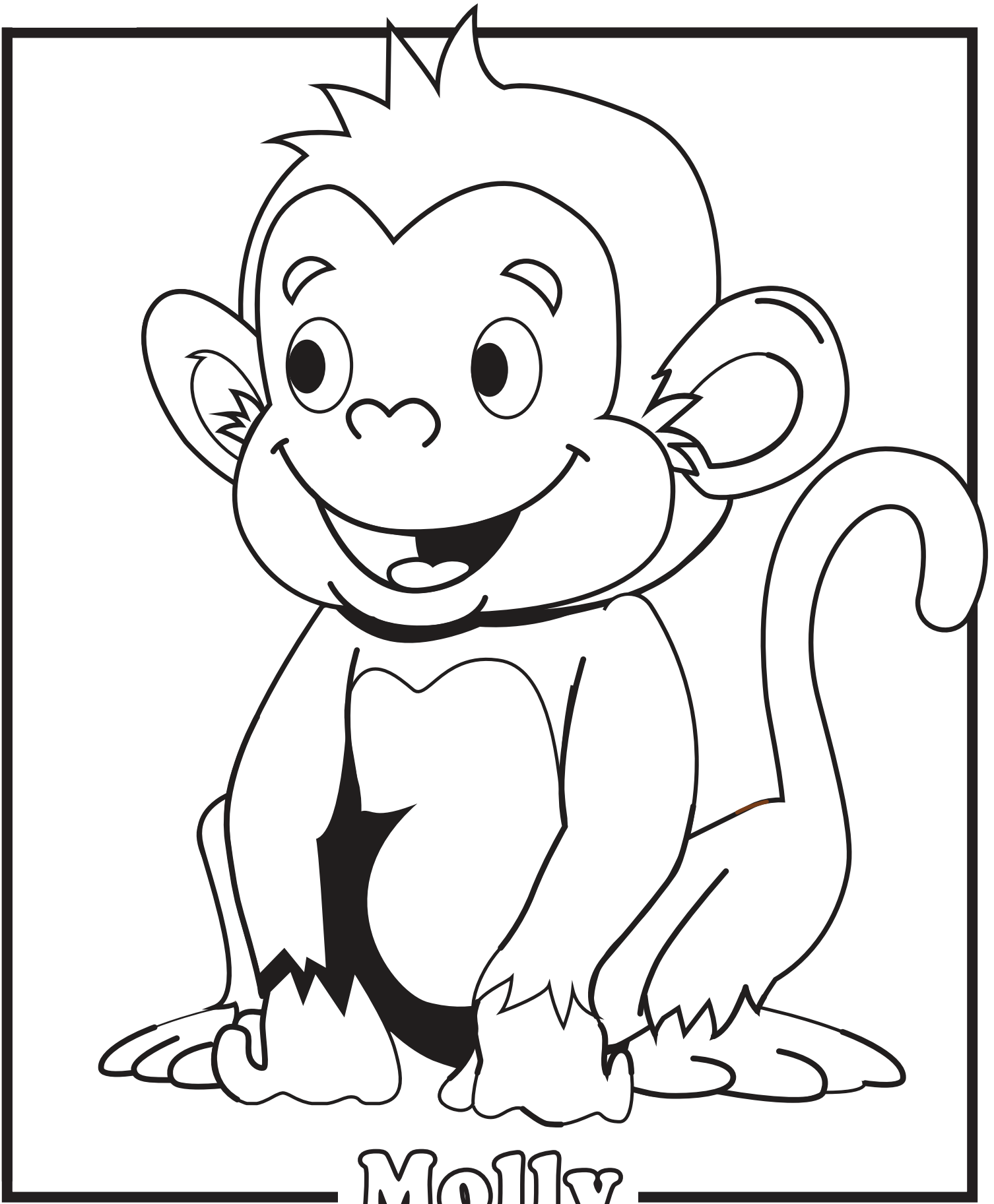
Heat

Flood

Emergency

Earthquake



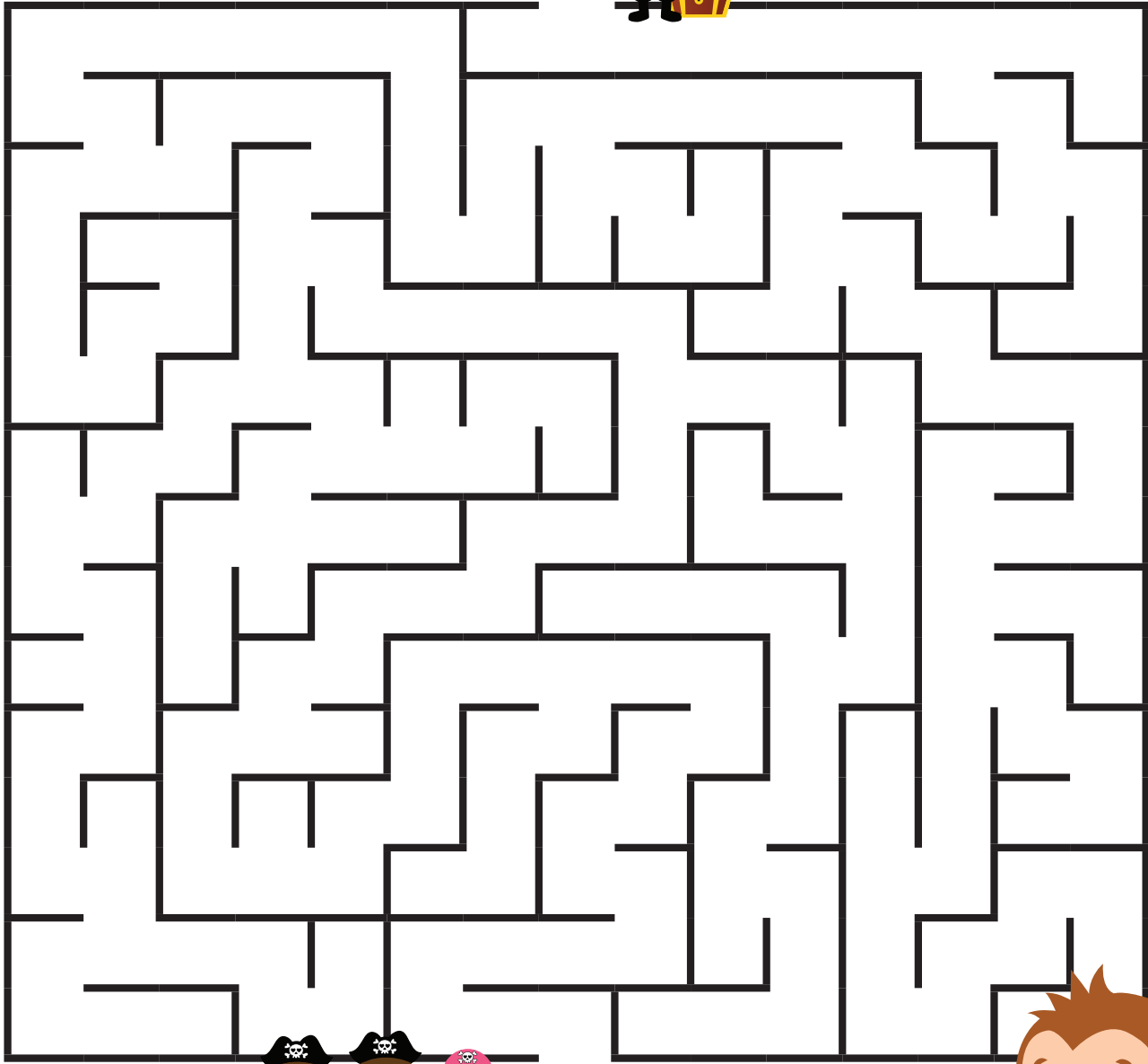


Molly

Kidd's loyal pet monkey. Molly shares a deep connection with Kidd, as they have been together since they were just babies.

Molly's Meeting Place Maze

Make your way through the maze to get to your planned family meeting place. Remember your Emergency Supply Kit



Certificate of Membership

to Captain Kit's Ready Crew



This is to certify that

_____ is a member of the Captain Kit Ready Crew

Captain Kit
Captain Kit



**GET READY!
STAY READY!**





A Place To Call Home



GET



READY!



STAY



READY!

City of Henderson

702-267-2222 | 240 Water St. Henderson, NV 89009-5050

cityofhenderson.com/getready