

City of Henderson Fire Safety Engineering Informational Bulletin

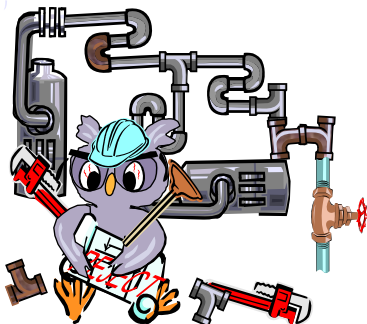
Issue 090

COHFireSafety@CityofHenderson.com

February 17, 2009

Residential PRV's

When Pressure Reducing Valves (PRV's) are installed on the domestic water supply to a home requiring a fire sprinkler system, the connection for the fire sprinkler system shall be made on the supply side of the PRV.



For a multi-purpose system design, the sprinkler piping shall be looped both vertically and horizontally, as well as minimizing any dead-end feeds. A single toilet tie-in should be made in the master bathroom using a PRV on the supply piping to the toilet connection if pressures exceed 80 psi at the fixture. The PRV shall be installed per the current adopted Plumbing Codes. This type of system design is intended to prevent water stagnation and comply with the Clean Water Act.

The effective date for this requirement will be
April 1, 2009.



Please e-mail comments, questions & suggestions regarding this bulletin to:
COHFireSafety@CityofHenderson.com or call 702-267-3630

If you do not wish to receive this bulletin, send a reply with REMOVE in the subject line